

# MONTHLY MEMBERSHIP PROGRESS REPORT

LOCATION MICHIGAN

District 10

Results as of: 3/31/2023

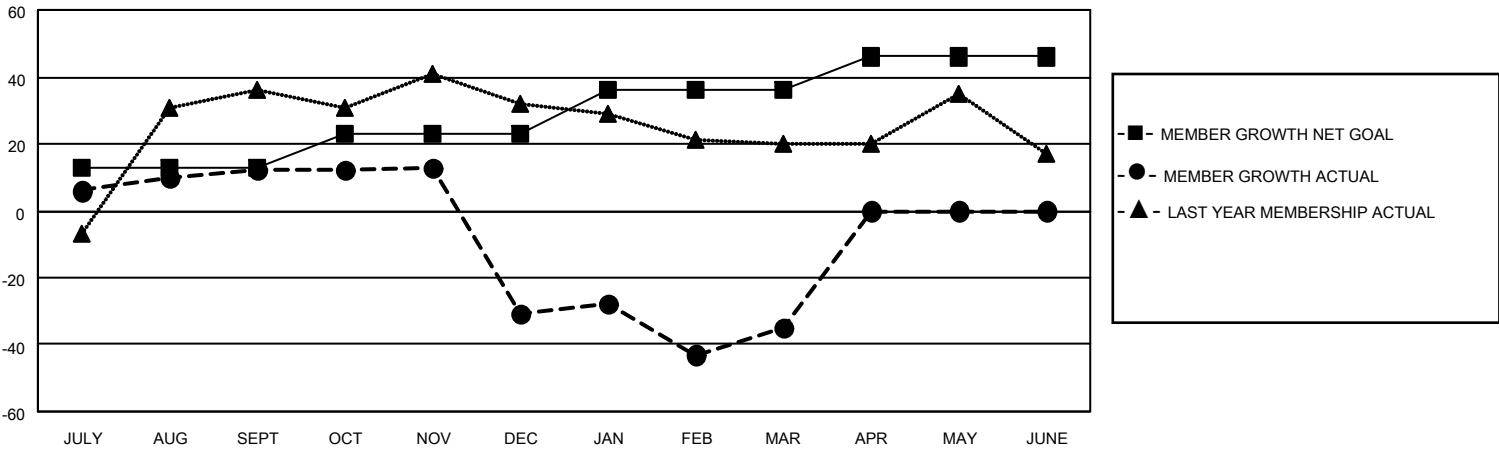
Clubs			
RESULTS FOR 2022-2023			
QUARTER	NEW CLUB GOAL	NEW CLUBS	DROPPED CLUBS
JULY/AUG/SEPT	0	0	0
OCT/NOV/DEC	1	0	0
JAN/FEB/MAR	0	0	1
APR/MAY/JUNE	1	0	0

Members			
RESULTS FOR 2022-2023			
QUARTER	MEMBER GROWTH NET GOAL	MEMBER GROWTH ACTUAL	DROPPED MEMBERS ACTUAL (including transfers)
JULY/AUG/SEPT	13	36	16
OCT/NOV/DEC	10	34	77
JAN/FEB/MAR	13	43	44
APR/MAY/JUNE	10	0	0

**GOALS AND ACTUAL NEW CLUBS CUMULATIVE**



**GOALS AND ACTUAL MEMBERS CUMULATIVE**



**DROPPED CLUBS: 1**

**30 CLUBS OF 49 ADDED 1 OR MORE NEW MEMBERS**

**GENDER DISTRIBUTION**

MALE	884 (67.90%)
FEMALE	418 (32.10%)
NON BINARY	0 (0.00%)
PREFER NOT TO ANSWER	0 (0.00%)

**DROPPED MEMBERS**

[CLICK HERE FOR CUMULATIVE MEMBERSHIP DATA](#)

DECEASED	28
CLUB CANCELLED	0
OTHER	109
<b>TOTAL</b>	<b>137</b>

TOTAL FAMILY UNIT MEMBERS	197
FAMILY MEMBERS PAYING HALF DUES	99